



Mancetter
MARINA





Why choose to visit and stay at Mancetter Marina

About THE MARINA

Set in the rolling hills of North Warwickshire in a beautiful & unique rural setting, Mancetter Marina offers peace and tranquillity. Our eye for detail has ensured the highest quality structure & finish whilst staying true to local wildlife and its countryside location.

The marina is impeccably maintained with landscaping managed for wildlife, which is already paying off with our resident kingfisher, bats and owls.

Immaculately presented we offer moorings for all sizes of narrowboats & cruisers in the heart of the Warwickshire ring.

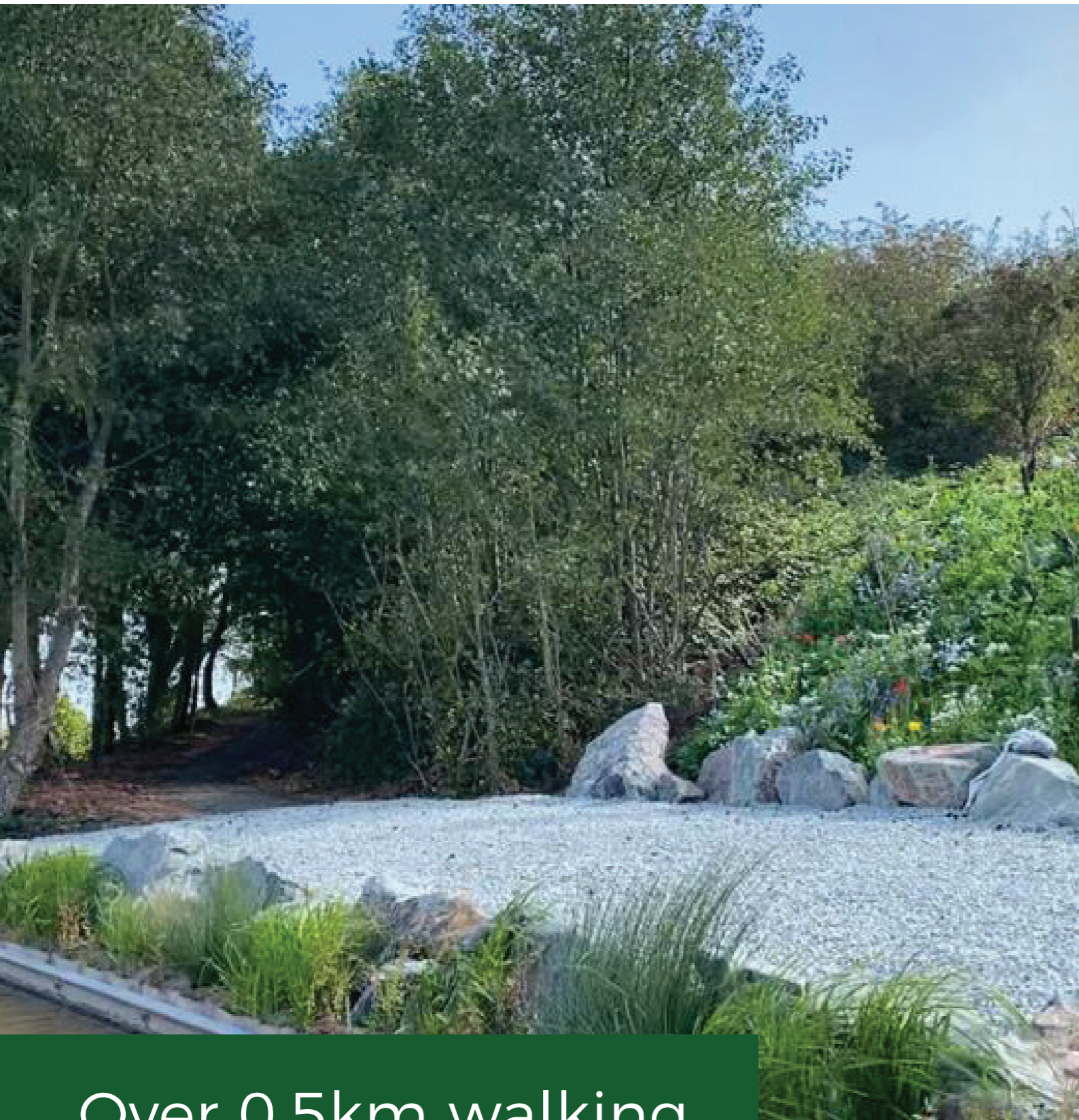
Jetties

- duracomposite decking on jetties
- non-slip & recycled plastic
- long lasting steel framework
- different lengths -from 49ft - 110ft
- finger & linear available
- sheltered positions

Green Credentials

- Nature trail over 250m with seating and views over 4 counties
- Canal wildlife planting surrounds jetties and wider site
- Whole site "as green as possible" promoting eco-friendly products and services





Over 0.5km walking Nature Trail along the waters edge

We offer a range of services at the marina which is headed up by Kathryn Oliphant. The team are passionate about all aspects of the marina, which is reflected in how immaculate and well managed the grounds are kept. We have tried to think of the practical needs of our customers and incorporated storage, safe & easy to use jetties & other excellent facilities within the site.

We are a dog friendly marina with several footpaths linking us to the wider countryside for excellent walks. The gated access means you can moor safely whilst enjoying the relaxed ambience.



16 AMP ELECTRIC SUPPLY TO EACH BERTH



WATER SUPPLY TO EACH BERTH



CCTV & CODED GATEACCESS



COAL & DIESEL



SERVICE AREA



60 BERTH MARINA



NATURE TRAIL



WiFi ACROSS THE SITE



LAUNDRY



STORAGE UNITS



ELSAN DISPOSAL



PUMP OUT

Our SERVICES



Our LOCATION

Set in the heart of the Warwickshire ring on the Coventry Canal, with over 40 miles of lock free waters to explore all year round. With easy connections to the Leicester Ring, Four Counties Ring & Birmingham Ring there is plenty of boating for everyone.

Excellent walks through Hartsill Hayes woods, Atherstone Golf Club and the surrounding countryside. 20 minutes from Bosworth Battlefield Heritage Centre and excellent access to the historic villages of Warwickshire & Leicestershire.



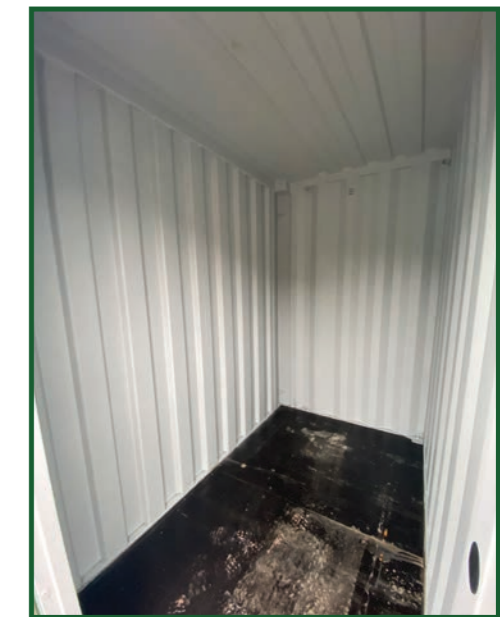
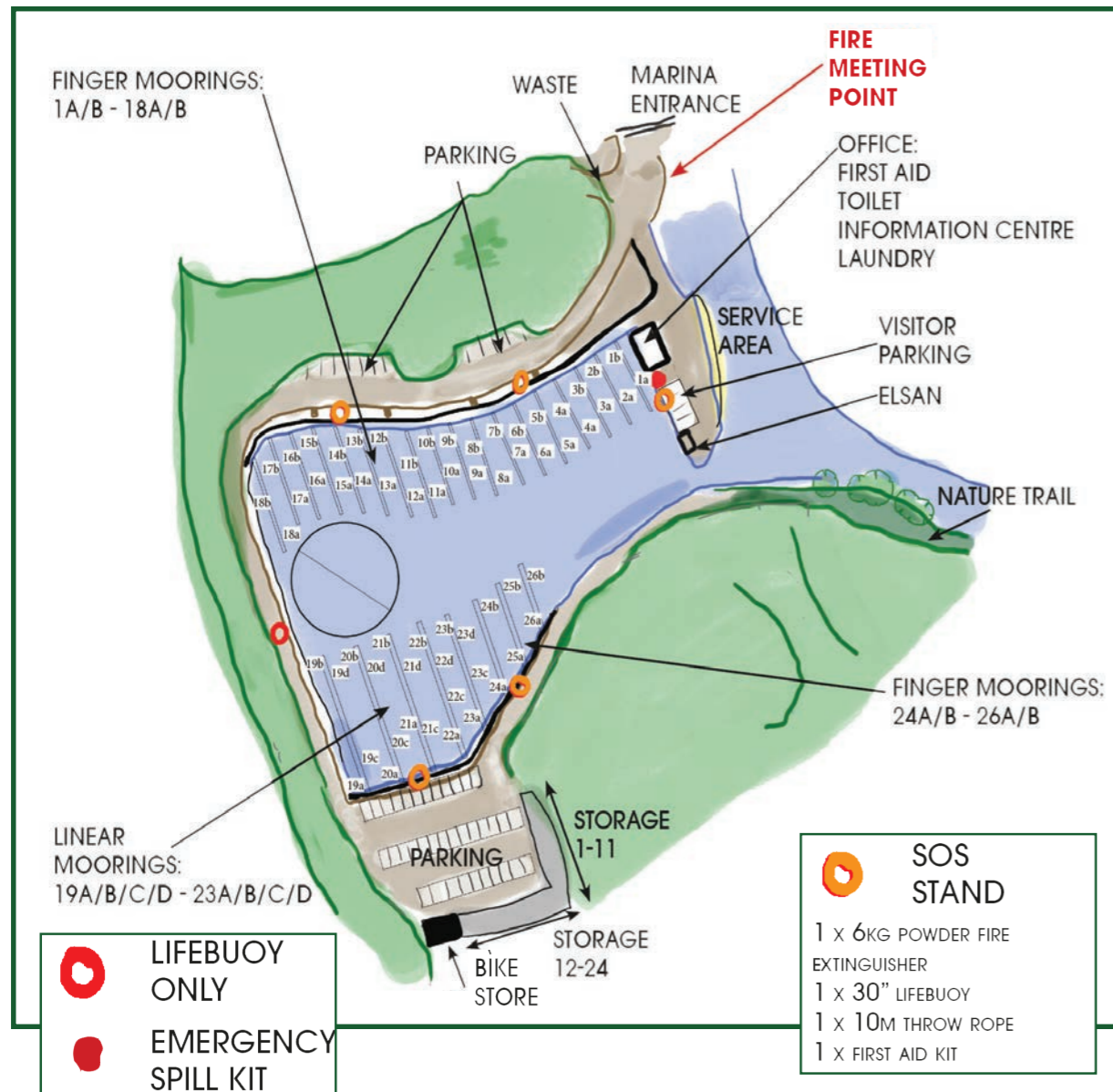
Amenities:

- Post Office
0.5 miles
- Atherstone Services, Shops & Town Centre
2 miles
- Anchor Inn @ Hartshill
2.5 miles
- The Blue Boar Pub
1.3 miles
- Dobbies Garden Centre & Cafe
1.6 miles



We pride ourselves on being 'small but perfectly formed, in tune with nature'

SITE MAP



Storage units are 5ft x 8ft, allocated on a first come first serve basis.

SOS stands and Emergency kits are strategically located around the marina.

We have a dedicated service area for any maintenance works.

Parking is available for 1 car per mooring or at an extra cost as detailed in the marina price list.

Each mooring has its own electric hook up point and water point.



Contact Us

MANCETTER MARINA
Quarry Lane
Mancetter
CV9 2RD

info@mancettermarina.co.uk
www.mancettermarina.co.uk
01827 215716
Viewings by appointment only